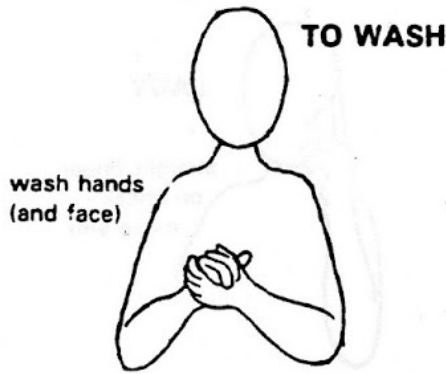


STAGE 1

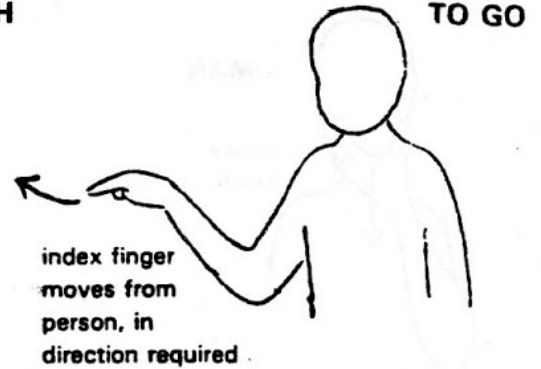


TO SIT



wash hands
(and face)

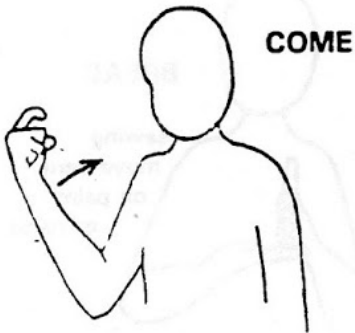
TO WASH



index finger
moves from
person, in
direction required

TO GO

TO BATH - mime bathing



COME



GIVE

Note : hand
movement is
always from
giver to
receiver



GOOD

O.K.

HELLO

use both
hands to mean
very good

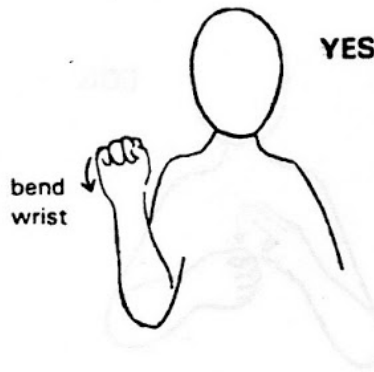


BAD

Naughty

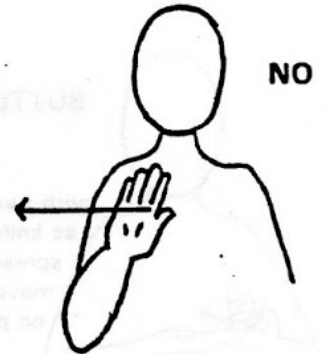
little
finger

use both
hands to mean
very bad

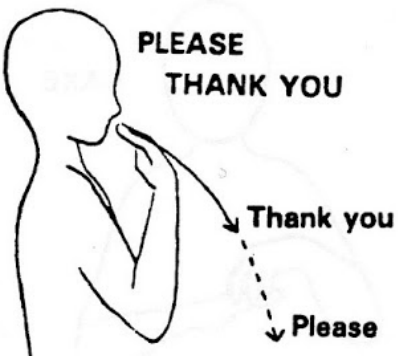


YES

bend
wrist



NO



PLEASE

THANK YOU

Thank you

Please



**GOOD
MORNING**

+

touch chest
with finger tips



GOODBYE

wave
hand